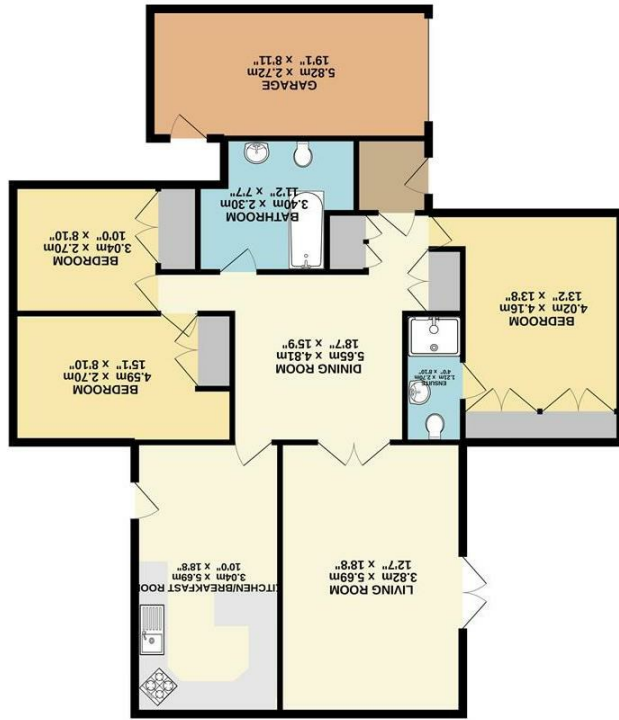


What every agency has been made to ensure the accuracy of the description contained here, measurements of rooms, areas and other details are given in good faith and believed to be correct, but any intending lessees do not rely on them as statements of fact, but must satisfy themselves by inspection or other means, as to their accuracy.



GROUND FLOOR  
125.3 sq.m. (1349 sq.ft.) approx.

Energy Efficiency Rating	
Potential	Current
<p>England &amp; Wales EU Directive 2002/91/EC</p>	
<p>Very energy efficient - lower running costs</p>	
A (92 plus)	
B (81-91)	
C (69-80)	
D (55-68)	
E (39-54)	
F (21-38)	
G (1-20)	
<p>Not energy efficient - higher running costs</p>	

EPC rating to follow.

Disclaimer - In accordance with the Property Misdescriptions Act, the company gives notice that all descriptions, references to condition, necessary permissions for use and other details are given in good faith and believed to be correct, but any intending lessees do not rely on them as statements of fact, but must satisfy themselves by inspection or other means, as to their accuracy.



Norfolk Property online.

Brundall | NR13  
**Guide price** £370,000 - freehold

Norfolk Property Online presents this exceptional three bedroom bungalow in a much sought after cul de sac within the popular Broadland village of Brundall just a short walk away from amenities.

Generously proportioned accommodation throughout briefly comprises; entrance hall, large living room with French doors out onto the garden, kitchen breakfast room, dining room, three double bedrooms all with built in wardrobes, the principle bedroom features an en suite shower room. There is a large family bathroom also.

Outside, the property which occupies a large corner plot, is approached by a driveway that leads to a garage.

There is a good sized garden to the front and side with further garden to the rear also.

